

aveilim

A woman with long dark hair is lying in a field of pink flowers, resting her head on her arm. The scene is dimly lit, creating a serene and peaceful atmosphere. The text is overlaid on the right side of the image.

AN INSPIRATION FROM A VERACIOUS PROMISE;

Avelin Is A Beautiful Breath Of Life Brought To Its Residents Through Greenery And An Unmatched Atmosphere.



TIMES[®]
DEVELOPMENTS

ABOUT TIMES DEVELOPMENTS

A boutique developer making its mark and impression on Egypt's real estate market. We hold nearly 300,000M² of area across our three mixed-use projects. Our shareholders have decades of industry experience. We capitalize on this deep knowledge and mastery as we step forward into the future of high-end experiences in New Cairo, and beyond.

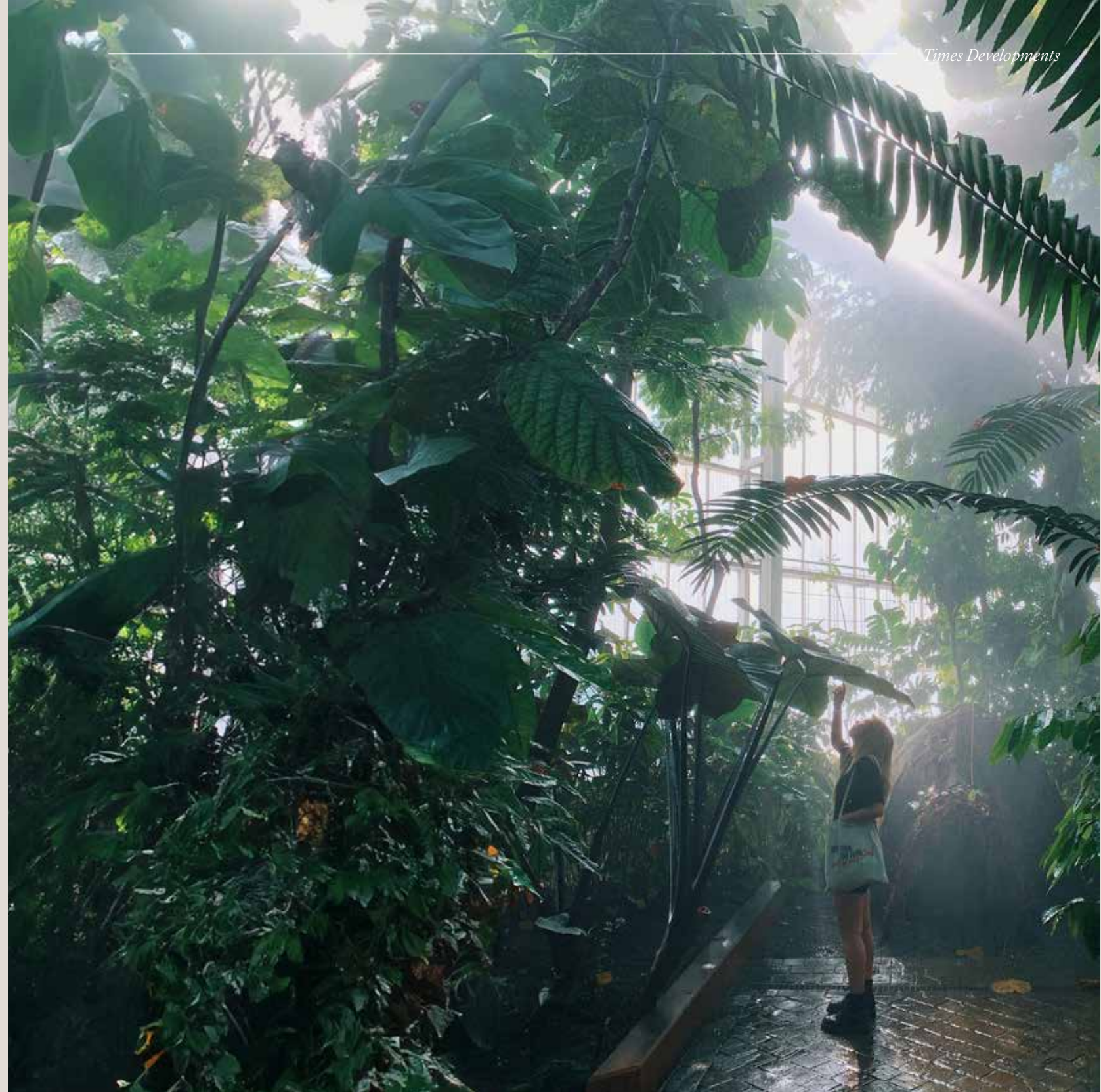
Our fresh approach is what sets us apart and what made our entry to the market significant. Our forward thinking helps us make the best out of emerging trends and even starting our own. We appreciate the importance of belonging and community, and we provide our clients with the sought-after experience.

WE PRIORITIZE HONESTY
AND TRANSPARENCY
IN ALL OUR DEALINGS
WITH TENANTS, CUSTOMERS,
AND PARTNERS.

Our commitment to ethical business practices builds trust within our community. We are developing and merging the finest qualities to perfectly describe our work culture, which will later be reflected on our image to the outside world.

WE CONTINUOUSLY SEEK CREATIVE SOLUTIONS

to enhance the shopping experience, promote sustainable practices, and adapt to changing market trends. Innovation drives our growth and competitiveness, with meticulous planning and unmistakable design.





WE TAKE OUR ROLE IN THE COMMUNITY SERIOUSLY

striving to minimize our environmental footprint, support local businesses, and contribute positively to the neighborhoods we serve. Responsibility guides our decisions and actions.

avelin

Your breath of fresh air amid one of the city's happening spots. Avelin is a full-fledged residential and commercial compound that brings together multiple elements of life within one destination. Built on 21 feddans, the project is endorsed with multiple residential apartments, embedded with inspiring greenery, and complimented with an unmatched commercial area. Introducing the concept of luxury boutique living incorporating all elements of life.



pinned in the heart of
NEW CAIRO

ARCHITECTURE EVOKING MODERNITY.

Built to create a unique modern life, Avelin is rich with minimal sleek designs at every front. With a creative vision for its masterplan and distinctive implementation of a smart design you'll walk into a realm of contemporary luxury.





SURROUNDED BY

THE BREATHES OF NATURE

With a distinctive urban character, Avelin is rich with open views and exceptional landscape features. Its low-density masterplan allows every resident to enjoy strolls and views that are enhanced with elements of nature, waterfall features and inspirational greenery.





LOCATION

RIGHT WHERE YOU SHOULD BE

Avelin's strategic location brings together the essential calmness with you being minutes away from everything you need.

10 MINUTES

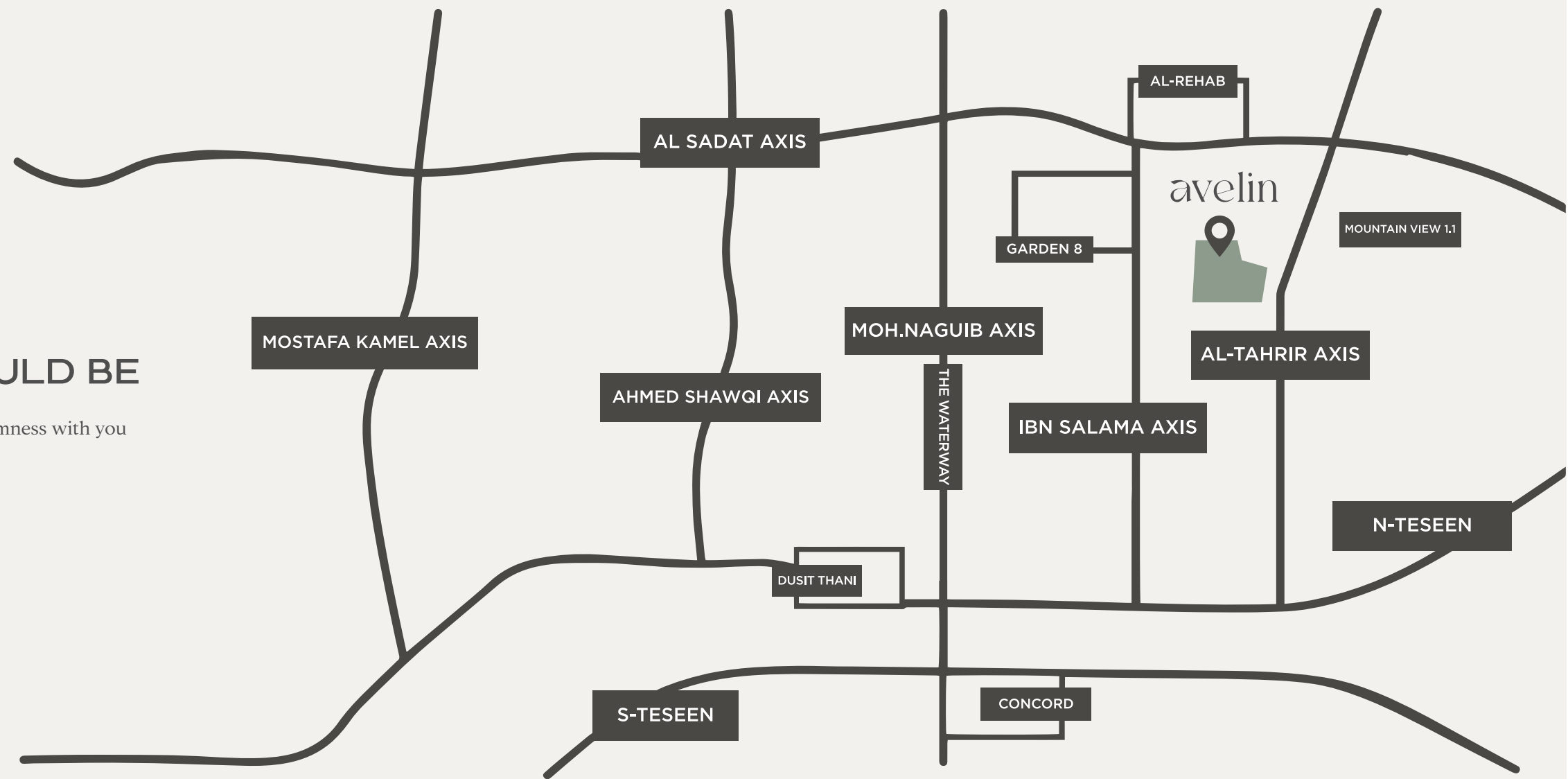
from 90 Street

25 MINUTES

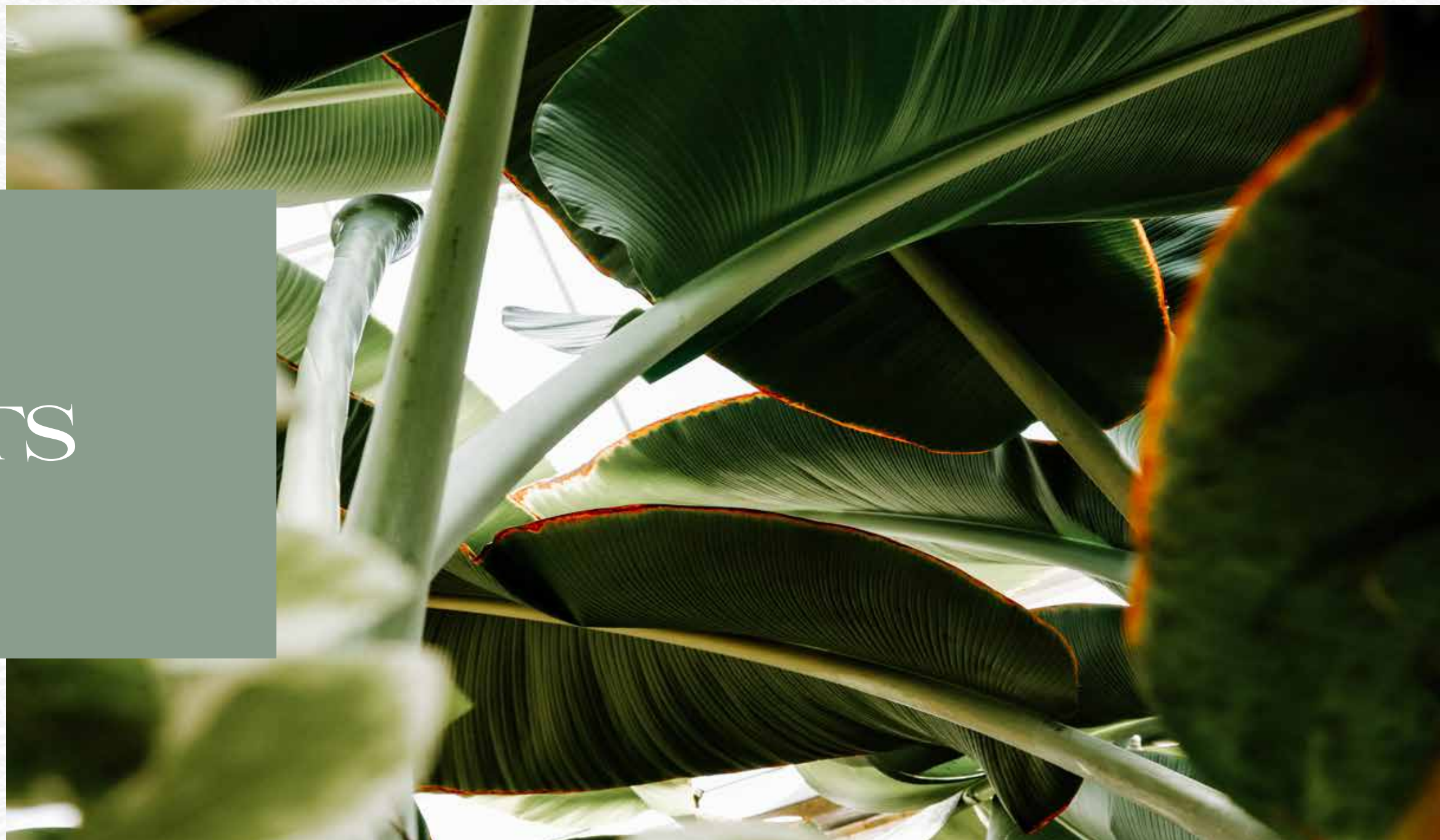
from Cairo Airport

30 MINUTES

from New Administrative Capital



3D SHOTS





AMENITIES

Every corner at Avelin is well thought of to ensure a contented quality of life. The daily needs are always within reach encompassed within a community that values superior liveable spaces.



CLUBHOUSE

Built to create a unique modern life, Avelin is rich with minimal sleek designs at every front. With a creative vision for its masterplan and distinctive implementation of a smart design you'll walk into a realm of contemporary luxury.





COMMERCIAL ZONE

Built to create a unique modern life, Avelin is rich with minimal sleek designs at every front. With a creative vision for its masterplan and distinctive implementation of a smart design you'll walk into a realm of contemporary luxury.

TODDLERS AREA

Built to create a unique modern life, Avelin is rich with minimal sleek designs at every front. With a creative vision for its masterplan and distinctive implementation of a smart design you'll walk into a realm of contemporary luxury.





KIDS AREA

Built to create a unique modern life, Avelin is rich with minimal sleek designs at every front. With a creative vision for its masterplan and distinctive implementation of a smart design you'll walk into a realm of contemporary luxury.

LARGE SHARED POOL

Built to create a unique modern life, Avelin is rich with minimal sleek designs at every front. With a creative vision for its masterplan and distinctive implementation of a smart design you'll walk into a realm of contemporary luxury.





OPEN AIR THEATRE

Built to create a unique modern life, Avelin is rich with minimal sleek designs at every front. With a creative vision for its masterplan and distinctive implementation of a smart design you'll walk into a realm of contemporary luxury.





FLOOR PLANS



APARTMENT D

Ground Floor

DISCLAIMER: All materials, dimensions and drawings are approximate. information is subject to change without notice. drawings are not to scale and actual usable floor spaces may vary from the scale floor plans. the developer reserves the right to make revisions to the floor plans

FLOOR PLAN

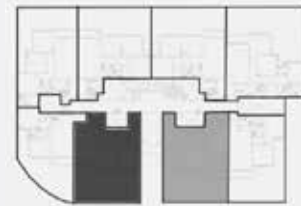
TYPE D

2 BEDROOMS
TOTAL AREA: 144 M²

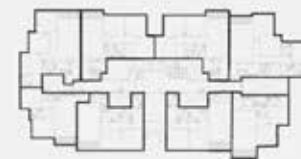
| | | | |
|-------------------|-------|---|-------|
| 1 Reception | 4.20m | x | 3.60m |
| 2 Dining | 4.20m | x | 3.60m |
| 3 Guest Toilet | 2.60m | x | 1.30m |
| 4 Kitchen | 3.70m | x | 2.50m |
| 5 Bedroom 1 | 3.80m | x | 3.70m |
| 6 Bathroom | 2.50m | x | 1.94m |
| 7 Master Bedroom | 3.80m | x | 3.80m |
| 8 Master Dressing | 3.74m | x | 1.84m |
| 9 Master Bathroom | 2.70m | x | 2.00m |
| 10 Terrace | 4.20m | x | 1.60m |
| 11 Garden | | | |



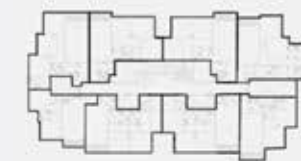
GROUND FLOOR PLAN



FIRST FLOOR PLAN



TYPICAL FLOOR PLAN



DISCLAIMER: All materials, dimensions and drawings are approximate. information is subject to change without notice. drawings are not to scale and actual usable floor spaces may vary from the scale floor plans. the developer reserves the right to make revisions to the floor plans

FLOOR PLAN

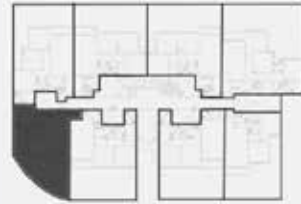
TYPE D

2 BEDROOMS
TOTAL AREA: 124 M²

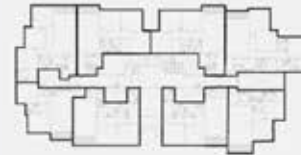
| | | | |
|-------------------|-------|---|-------|
| 1 Reception | 4.20m | x | 3.50m |
| 2 Dining | 4.20m | x | 3.00m |
| 3 Kitchen | 3.60m | x | 1.70m |
| 4 Bedroom 1 | 3.80m | x | 3.75m |
| 5 Bathroom | 2.70m | x | 1.70m |
| 6 Master Lobby | 1.88m | x | 1.83m |
| 7 Master Dressing | 3.80m | x | 3.40m |
| 8 Master Bathroom | 2.00m | x | 1.83m |
| 9 Terrace 1 | 4.20m | x | 1.60m |
| 10 Terrace 2 | 2.10m | | 1.60m |
| 11 Garden | | | |



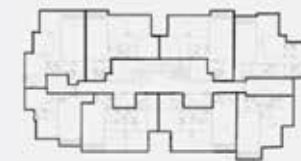
GROUND FLOOR PLAN



FIRST FLOOR PLAN



TYPICAL FLOOR PLAN

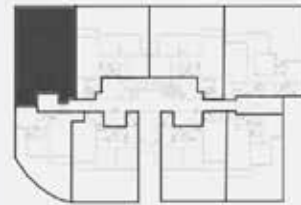


DISCLAIMER: All materials, dimensions and drawings are approximate. information is subject to change without notice. drawings are not to scale and actual usable floor spaces may vary from the scale floor plans. the developer reserves the right to make revisions to the floor plans

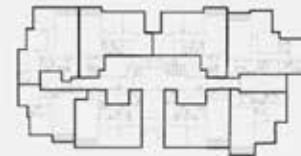
FLOOR PLAN



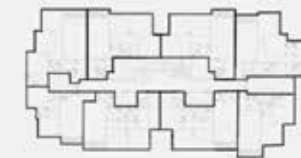
GROUND FLOOR PLAN



FIRST FLOOR PLAN



TYPICAL FLOOR PLAN



TYPE D

3 BEDROOMS
TOTAL AREA: 168 M²

| | | | |
|--------------------|-------|---|-------|
| 1 Reception | 4.20m | X | 4.20m |
| 2 Dining | 4.20m | X | 3.20m |
| 3 Guest Toilet | 1.76m | X | 1.40m |
| 4 Kitchen | 3.30m | X | 2.60m |
| 5 Bedroom 1 | 3.80m | X | 3.80m |
| 6 Bedroom 2 | 3.80m | X | 3.70m |
| 7 Bathroom | 2.60m | X | 1.90m |
| 8 Master Bedroom | 3.80m | X | 3.70m |
| 9 Master Dressing | 2.30m | X | 1.75m |
| 10 Master Bathroom | 2.30m | X | 2.00m |
| 11 Terrace 1 | 1.60m | X | 4.20m |
| 12 Terrace 2 | 1.40m | X | 1.60m |
| 13 Garden | | | |

DISCLAIMER: All materials, dimensions and drawings are approximate. information is subject to change without notice. drawings are not to scale and actual usable floor spaces may vary from the scale floor plans. the developer reserves the right to make revisions to the floor plans

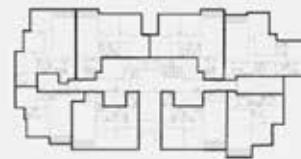
FLOOR PLAN



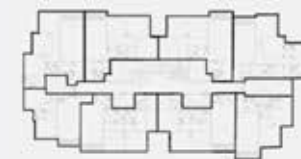
GROUND FLOOR PLAN



FIRST FLOOR PLAN



TYPICAL FLOOR PLAN



TYPE D

3 BEDROOMS
TOTAL AREA: 160 M²

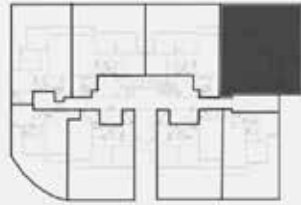
| | | | |
|-------------------|-------|---|-------|
| 1 Reception | 4.20m | X | 4.20m |
| 2 Dining | 4.20m | X | 3.00m |
| 3. Guest Toilet | 1.90m | X | 1.32m |
| 4 Kitchen | 3.00m | X | 2.55m |
| 5 Bedroom 1 | 3.80m | X | 3.70m |
| 5 Bedroom 2 | 3.80m | X | 3.78m |
| 6 Bathroom | 2.50m | X | 1.94m |
| 7 Master Bedroom | 3.80m | X | 3.78m |
| 8 Master Dressing | 2.50m | X | 1.40m |
| 9 Master Bathroom | 2.50m | X | 1.90m |
| 10 Terrace 1 | 4.20m | X | 1.60m |
| 11 Terrace 2 | 1.55m | X | 1.60m |
| 11 Garden | | | |

DISCLAIMER: All materials, dimensions and drawings are approximate. information is subject to change without notice. drawings are not to scale and actual usable floor spaces may vary from the scale floor plans. the developer reserves the right to make revisions to the floor plans

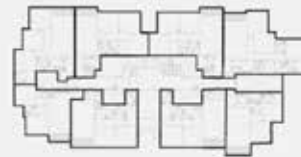
FLOOR PLAN



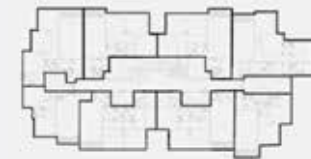
GROUND FLOOR PLAN



FIRST FLOOR PLAN



TYPICAL FLOOR PLAN



TYPE D

3 BEDROOMS + LIVING
TOTAL AREA: 185 M²

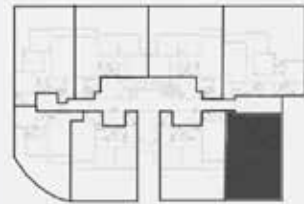
| | | | |
|--------------------|-------|---|-------|
| 1 Reception | 4.20m | x | 4.15m |
| 2 Dining | 4.20m | x | 3.00m |
| 3 Guest Toilet | 1.70m | x | 1.30m |
| 3 Kitchen | 3.00m | x | 2.65m |
| 4 Living | 4.80m | x | 2.60m |
| 5 Bedroom1 | 3.80m | x | 3.70m |
| 6 Bedroom2 | 3.70m | x | 3.70m |
| 7 Bathroom | 2.50m | x | 2.00m |
| 8 Master Bedroom | 3.80m | x | 3.50m |
| 9 Master Dressing | 2.20m | x | 1.60m |
| 10 Master Bathroom | 2.20m | x | 2.00m |
| 11 Terrace | 4.20m | x | 1.60m |
| 12 Garden | | | |

DISCLAIMER: All materials, dimensions and drawings are approximate. information is subject to change without notice. drawings are not to scale and actual usable floor spaces may vary from the scale floor plans. the developer reserves the right to make revisions to the floor plans

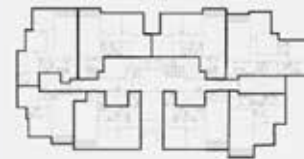
FLOOR PLAN



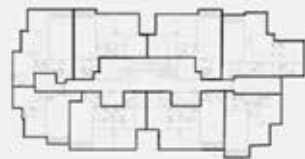
GROUND FLOOR PLAN



FIRST FLOOR PLAN



TYPICAL FLOOR PLAN



TYPE D

2 BEDROOMS
TOTAL AREA: 130 M²

| | | | |
|-------------------|-------|---|-------|
| 1 Reception | 4.20m | x | 4.00m |
| 2 Dining | 4.20m | x | 3.00m |
| 3 Kitchen | 2.60m | x | 2.60m |
| 4 Bathroom | 2.40m | x | 2.00m |
| 5 Bedroom 1 | 3.80m | x | 3.80m |
| 6 Master Bedroom | 3.80m | x | 3.30m |
| 7 Master Dressing | 1.90m | x | 1.75m |
| 8 Master Bathroom | 2.00m | x | 1.90m |
| 9 Terrace 1 | 4.20m | x | 1.60m |
| 10 terrace 2 | 2.20m | x | 1.60m |
| 11 Garden | | | |

DISCLAIMER: All materials, dimensions and drawings are approximate. information is subject to change without notice. drawings are not to scale and actual usable floor spaces may vary from the scale floor plans. the developer reserves the right to make revisions to the floor plans

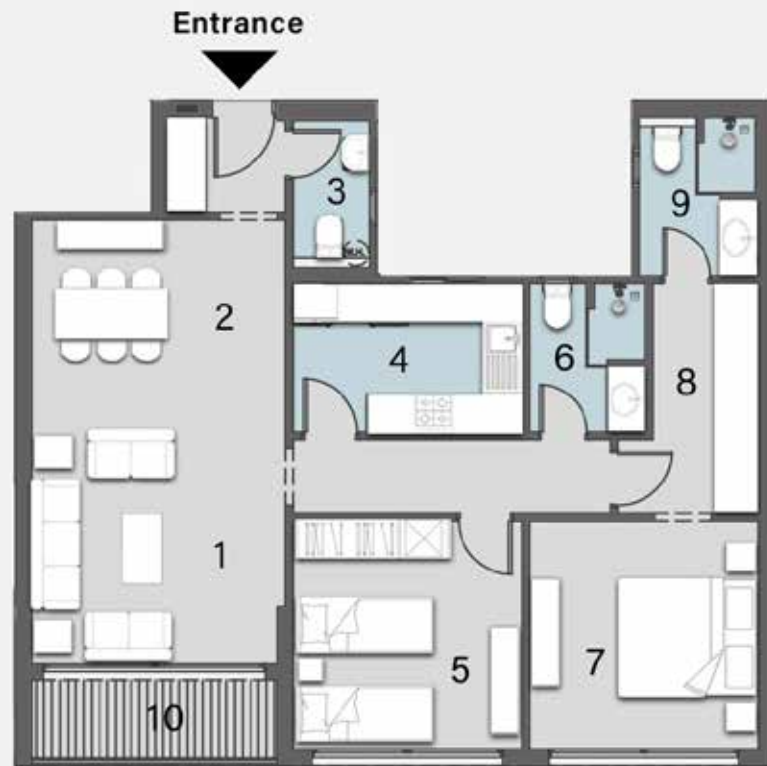


DISCLAIMER: All materials, dimensions and drawings are approximate. information is subject to change without notice. drawings are not to scale and actual usable floor spaces may vary from the scale floor plans. the developer reserves the right to make revisions to the floor plans

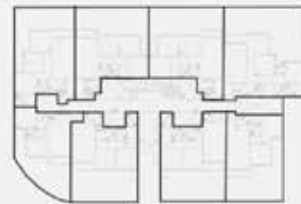
APARTMENT D

First Floor

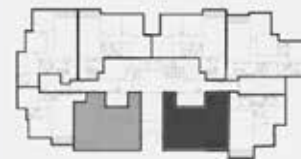
FLOOR PLAN



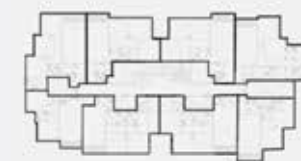
GROUND FLOOR PLAN



FIRST FLOOR PLAN



TYPICAL FLOOR PLAN



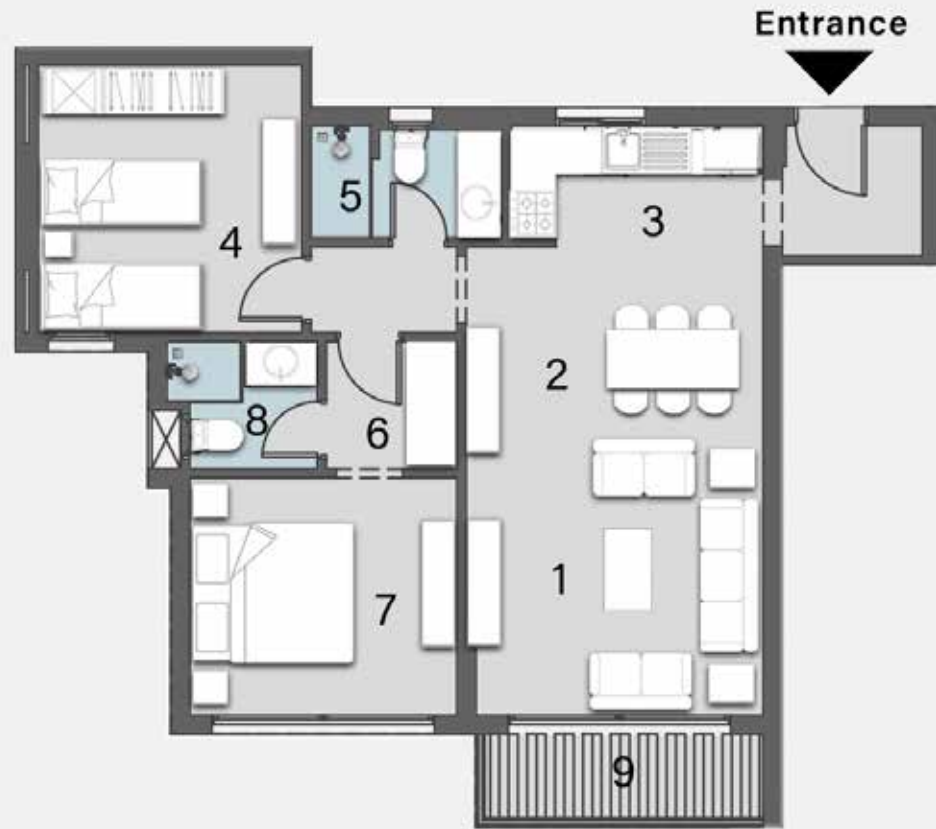
TYPE D

2 BEDROOMS
TOTAL AREA: 144 M²

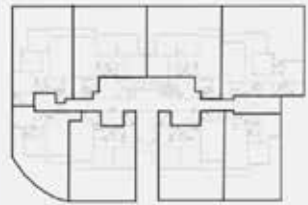
| | | | |
|--------------------|-------|---|-------|
| 1 Reception | 4.20m | x | 4.20m |
| 2 Dining | 4.20m | x | 3.20m |
| 3 Guest Toilet | 1.76m | x | 1.40m |
| 4 Kitchen | 3.30m | x | 2.60m |
| 5 Bedroom 1 | 3.80m | x | 3.80m |
| 6 Bedroom 2 | 3.80m | x | 3.70m |
| 7 Bathroom | 2.60m | x | 1.90m |
| 8 Master Bedroom | 3.80m | x | 3.70m |
| 9 Master Dressing | 2.30m | x | 1.75m |
| 10 Master Bathroom | 2.30m | x | 2.00m |
| 11 Terrace 1 | 1.60m | x | 4.20m |
| 12 Terrace 2 | 1.40m | x | 1.60m |

DISCLAIMER: All materials, dimensions and drawings are approximate. information is subject to change without notice. drawings are not to scale and actual usable floor spaces may vary from the scale floor plans. the developer reserves the right to make revisions to the floor plans

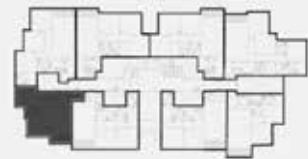
FLOOR PLAN



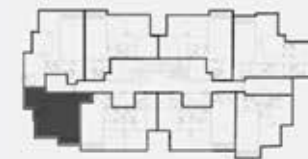
GROUND FLOOR PLAN



FIRST FLOOR PLAN



TYPICAL FLOOR PLAN



TYPE D

2 BEDROOMS
TOTAL AREA: 124 M²

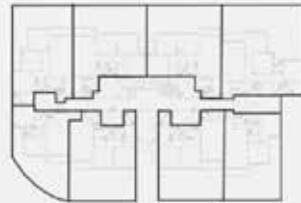
| | | | |
|-------------------|-------|---|-------|
| 1 Reception | 4.20m | x | 3.50m |
| 2 Dining | 4.20m | x | 3.00m |
| 3 Kitchen | 3.60m | x | 1.70m |
| 4 Bedroom 1 | 3.80m | x | 3.75m |
| 5 Bathroom | 2.70m | x | 1.70m |
| 6 Master Lobby | 1.88m | x | 1.83m |
| 7 Master Dressing | 3.80m | x | 3.40m |
| 8 Master Bathroom | 2.00m | x | 1.83m |
| 9 Terrace 1 | 4.20m | x | 1.60m |
| 10 Terrace 2 | 2.10m | | 1.60m |

DISCLAIMER: All materials, dimensions and drawings are approximate. information is subject to change without notice. drawings are not to scale and actual usable floor spaces may vary from the scale floor plans. the developer reserves the right to make revisions to the floor plans

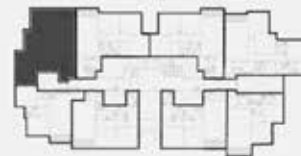
FLOOR PLAN



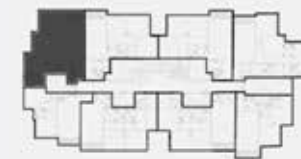
GROUND FLOOR PLAN



FIRST FLOOR PLAN



TYPICAL FLOOR PLAN



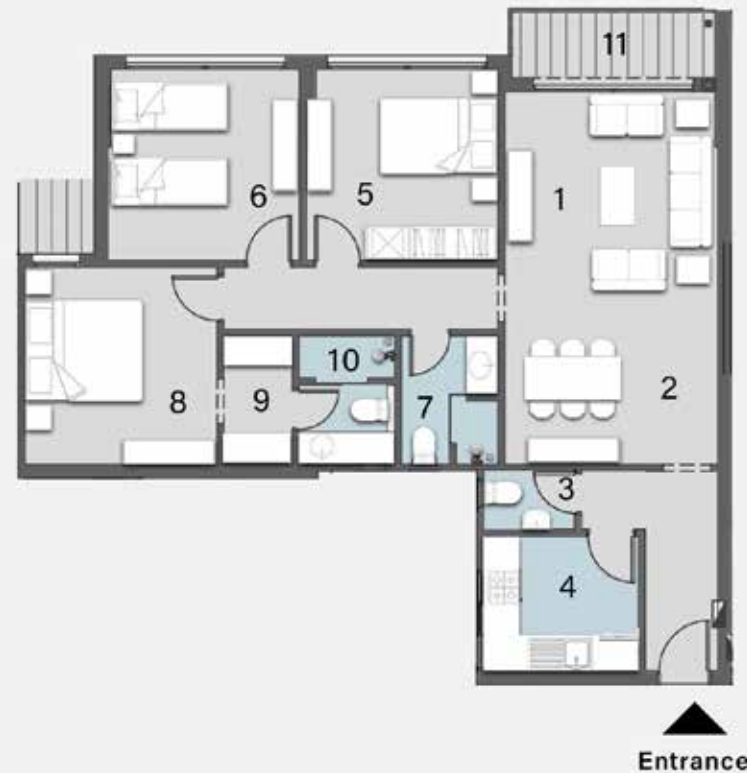
TYPE D

3 BEDROOMS
TOTAL AREA: 168 M²

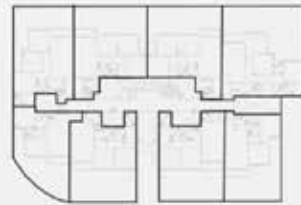
| | | | |
|--------------------|-------|---|-------|
| 1 Reception | 4.20m | x | 4.20m |
| 2 Dining | 4.20m | x | 3.20m |
| 3 Guest Toilet | 1.76m | x | 1.40m |
| 4 Kitchen | 3.30m | x | 2.60m |
| 5 Bedroom 1 | 3.80m | x | 3.80m |
| 6 Bedroom 2 | 3.80m | x | 3.70m |
| 7 Bathroom | 2.60m | x | 1.90m |
| 8 Master Bedroom | 3.80m | x | 3.70m |
| 9 Master Dressing | 2.30m | x | 1.75m |
| 10 Master Bathroom | 2.30m | x | 2.00m |
| 11 Terrace 1 | 1.60m | x | 4.20m |
| 12 Terrace 2 | 1.40m | x | 1.60m |
| 13 Garden | | | |

DISCLAIMER: All materials, dimensions and drawings are approximate. information is subject to change without notice. drawings are not to scale and actual usable floor spaces may vary from the scale floor plans. the developer reserves the right to make revisions to the floor plans

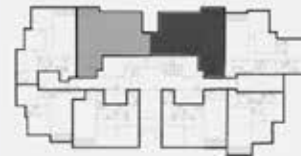
FLOOR PLAN



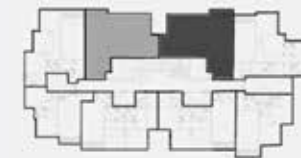
GROUND FLOOR PLAN



FIRST FLOOR PLAN



TYPICAL FLOOR PLAN



TYPE D

3 BEDROOMS
TOTAL AREA: 160 M²

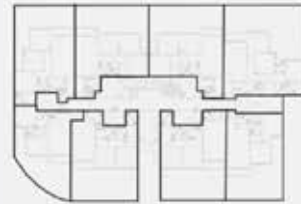
| | | | |
|-------------------|-------|---|-------|
| 1 Reception | 4.20m | x | 4.20m |
| 2 Dining | 4.20m | x | 3.00m |
| 3. Guest Toilet | 1.90m | x | 1.32m |
| 4 Kitchen | 3.00m | x | 2.55m |
| 5 Bedroom 1 | 3.80m | x | 3.70m |
| 5 Bedroom 2 | 3.80m | x | 3.78m |
| 6 Bathroom | 2.50m | x | 1.94m |
| 7 Master Bedroom | 3.80m | x | 3.78m |
| 8 Master Dressing | 2.50m | x | 1.40m |
| 9 Master Bathroom | 2.50m | x | 1.90m |
| 10 Terrace 1 | 4.20m | x | 1.60m |
| 11 Terrace 2 | 1.55m | x | 1.60m |

DISCLAIMER: All materials, dimensions and drawings are approximate. information is subject to change without notice. drawings are not to scale and actual usable floor spaces may vary from the scale floor plans. the developer reserves the right to make revisions to the floor plans

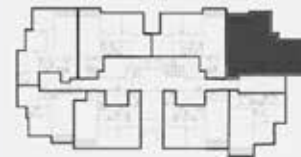
FLOOR PLAN



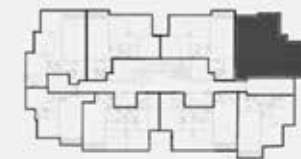
GROUND FLOOR PLAN



FIRST FLOOR PLAN



TYPICAL FLOOR PLAN



TYPE D

3 BEDROOMS + LIVING
TOTAL AREA: 185 M²

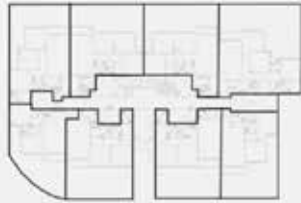
| | | | |
|--------------------|-------|---|-------|
| 1 Reception | 4.20m | x | 4.15m |
| 2 Dining | 4.20m | x | 3.00m |
| 3 Guest Toilet | 1.70m | x | 1.30m |
| 3 Kitchen | 3.00m | x | 2.65m |
| 4 Living | 4.80m | x | 2.60m |
| 5 Bedroom1 | 3.80m | x | 3.70m |
| 6 Bedroom2 | 3.70m | x | 3.70m |
| 7 Bathroom | 2.50m | x | 2.00m |
| 8 Master Bedroom | 3.80m | x | 3.50m |
| 9 Master Dressing | 2.20m | x | 1.60m |
| 10 Master Bathroom | 2.20m | x | 2.00m |
| 11 Terrace | 4.20m | x | 1.60m |
| 12 Garden | | | |

DISCLAIMER: All materials, dimensions and drawings are approximate. information is subject to change without notice. drawings are not to scale and actual usable floor spaces may vary from the scale floor plans. the developer reserves the right to make revisions to the floor plans

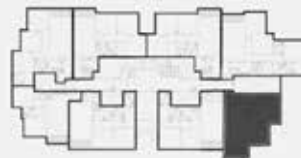
FLOOR PLAN



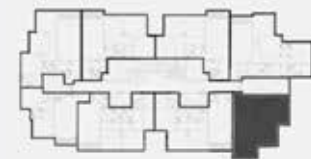
GROUND FLOOR PLAN



FIRST FLOOR PLAN



TYPICAL FLOOR PLAN

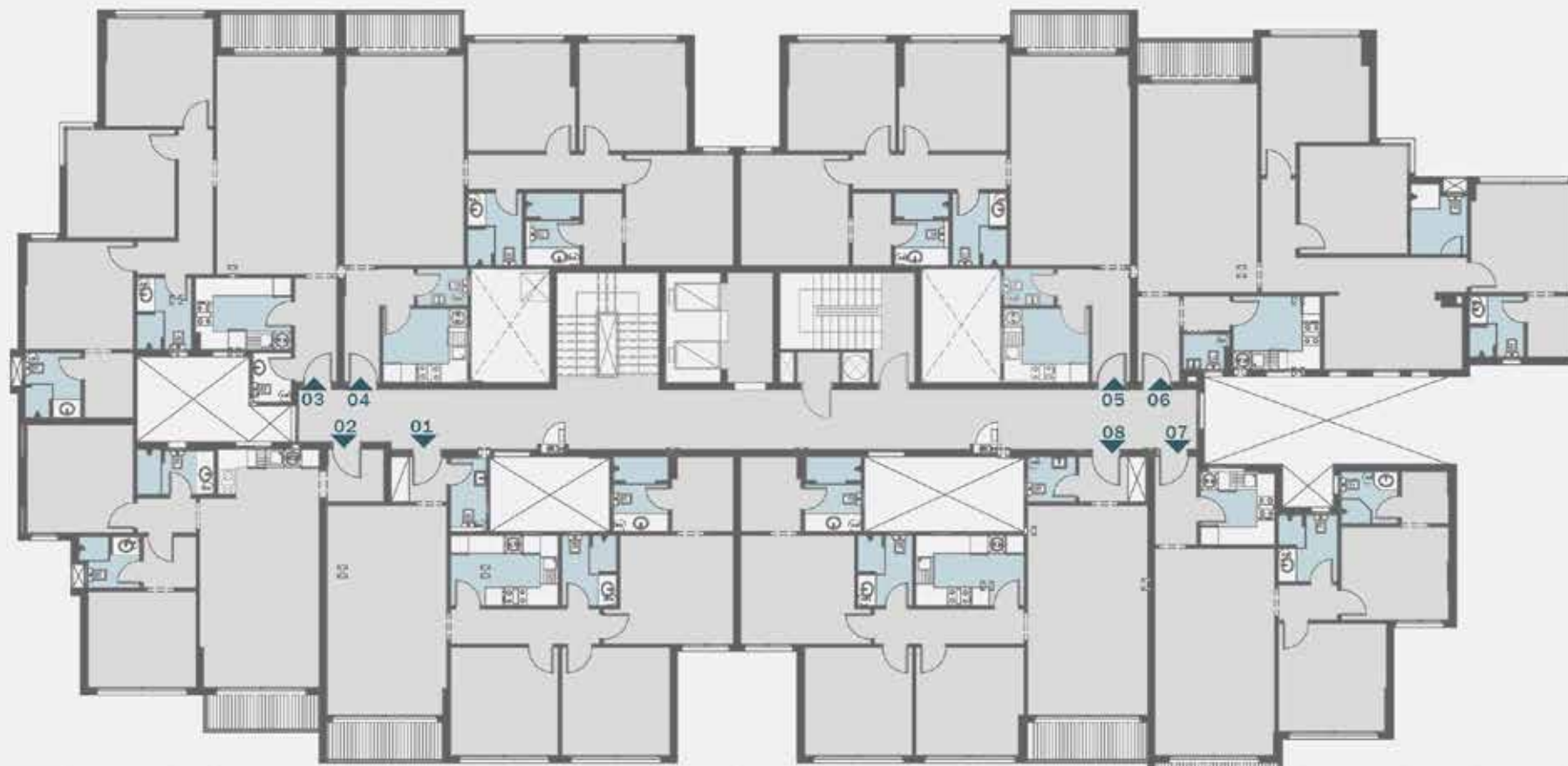


TYPE D

2 BEDROOMS
TOTAL AREA: 130 M²

| | | | |
|-------------------|-------|---|-------|
| 1 Reception | 4.20m | x | 4.00m |
| 2 Dining | 4.20m | x | 3.00m |
| 3 Kitchen | 2.60m | x | 2.60m |
| 4 Bathroom | 2.40m | x | 2.00m |
| 5 Bedroom 1 | 3.80m | x | 3.80m |
| 6 Master Bedroom | 3.80m | x | 3.30m |
| 7 Master Dressing | 1.90m | x | 1.75m |
| 8 Master Bathroom | 2.00m | x | 1.90m |
| 9 Terrace 1 | 4.20m | x | 1.60m |
| 10 terrace 2 | 2.20m | x | 1.60m |
| 11 Garden | | | |

DISCLAIMER: All materials, dimensions and drawings are approximate. information is subject to change without notice. drawings are not to scale and actual usable floor spaces may vary from the scale floor plans. the developer reserves the right to make revisions to the floor plans



DISCLAIMER: All materials, dimensions and drawings are approximate. information is subject to change without notice. drawings are not to scale and actual usable floor spaces may vary from the scale floor plans. the developer reserves the right to make revisions to the floor plans

APARTMENT D

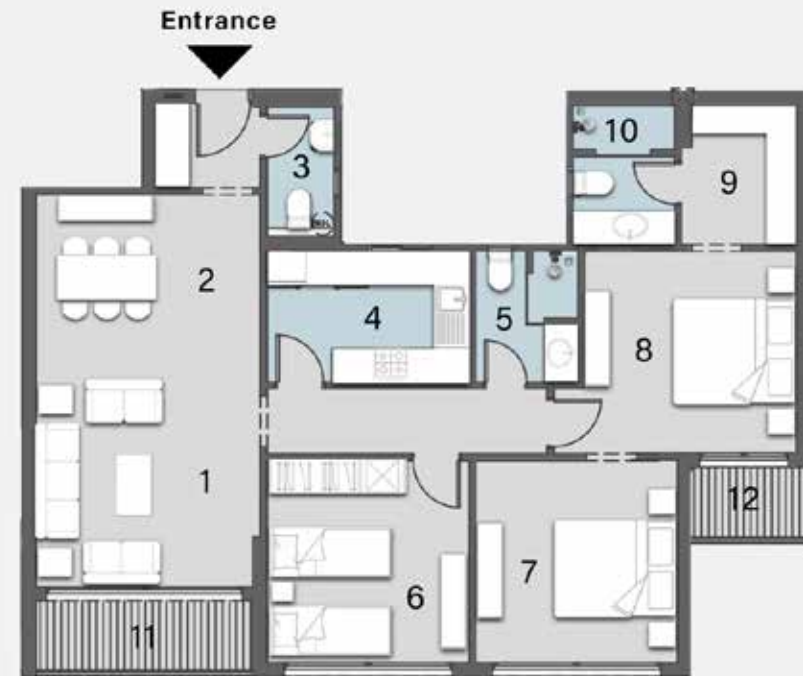
Typical Floor

FLOOR PLAN

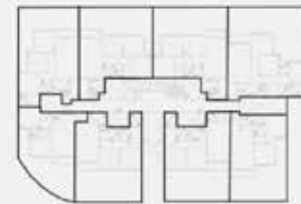
TYPE D

3 BEDROOMS
TOTAL AREA:163 M²

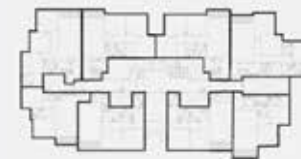
| | | | |
|--------------------|-------|---|-------|
| 1 Reception | 4.20m | x | 3.60m |
| 2 Dining | 4.20m | x | 3.60m |
| 3 Guest Toilet | 2.60m | x | 1.30m |
| 4 Kitchen | 3.70m | x | 2.50m |
| 5 Bathroom | 2.50m | x | 1.90m |
| 6 Bedroom 1 | 3.80m | x | 3.70m |
| 7 Bedroom 2 | 3.80m | x | 3.80m |
| 8 Master Bedroom | 3.90m | x | 3.80m |
| 9 Master Dressing | 2.70m | x | 2.20m |
| 10 Master Bathroom | 2.70m | x | 2.00m |
| 11 Terrace 1 | 4.20m | x | 1.60m |
| 12 Terrace 2 | 2.10m | x | 1.60m |



GROUND FLOOR PLAN



FIRST FLOOR PLAN



TYPICAL FLOOR PLAN



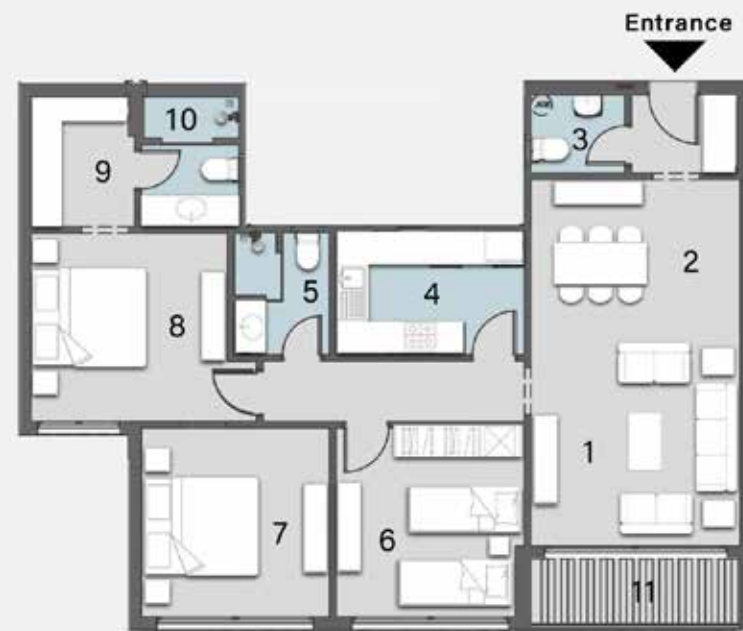
DISCLAIMER: All materials, dimensions and drawings are approximate. information is subject to change without notice. drawings are not to scale and actual usable floor spaces may vary from the scale floor plans. the developer reserves the right to make revisions to the floor plans

FLOOR PLAN

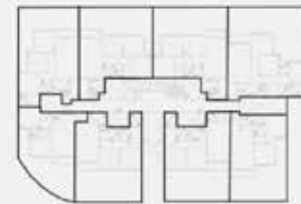
TYPE D

3 BEDROOMS
TOTAL AREA: 168 M²

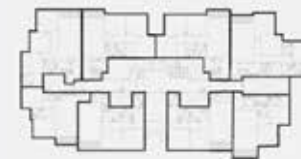
| | | | |
|--------------------|-------|---|-------|
| 1 Reception | 4.20m | x | 3.60m |
| 2 Dining | 4.20m | x | 3.60m |
| 3 Guest Toilet | 2.60m | x | 1.30m |
| 4 Kitchen | 3.70m | x | 2.50m |
| 5 Bathroom | 2.50m | x | 1.90m |
| 6 Bedroom 1 | 3.80m | x | 3.70m |
| 7 Bedroom 2 | 3.80m | x | 3.80m |
| 8 Master Bedroom | 3.90m | x | 3.80m |
| 9 Master Dressing | 2.70m | x | 2.20m |
| 10 Master Bathroom | 2.70m | x | 2.00m |
| 11 Terrace 1 | 4.20m | x | 1.60m |
| 12 Terrace 2 | 2.10m | x | 1.60m |



GROUND FLOOR PLAN



FIRST FLOOR PLAN



TYPICAL FLOOR PLAN



DISCLAIMER: All materials, dimensions and drawings are approximate. information is subject to change without notice. drawings are not to scale and actual usable floor spaces may vary from the scale floor plans. the developer reserves the right to make revisions to the floor plans



DISCLAIMER: All materials, dimensions and drawings are approximate. information is subject to change without notice. drawings are not to scale and actual usable floor spaces may vary from the scale floor plans. the developer reserves the right to make revisions to the floor plans

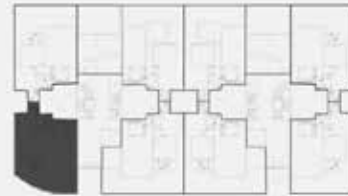
APARTMENT F

Ground Floor

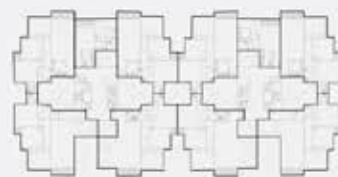
FLOOR PLAN



GROUND FLOOR PLAN



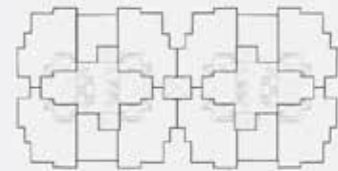
FIRST FLOOR PLAN



TYPICAL FLOOR PLAN



ROOF FLOOR PLAN



TYPE F

3 BEDROOMS
TOTAL AREA: 156 M²

| | | | |
|-------------------|-------|---|-------|
| 1 Reception | 4.20m | x | 4.20m |
| 2 Dining | 3.00m | x | 4.20m |
| 3 Guest Toilet | 1.40m | x | 2.00m |
| 4 Kitchen | 2.80m | x | 2.80m |
| 5 Bathroom | 2.60m | x | 2.00m |
| 6 Master Bedroom | 3.80m | x | 3.80m |
| 7 Master Bathroom | 2.30m | x | 2.00m |
| 8 Bedroom 1 | 3.70m | x | 3.70m |
| 9 Bedroom 2 | 3.80m | x | 3.80m |
| 10 Terrace 1 | 4.20m | x | 1.60m |
| 11 Terrace 2 | 1.50m | x | 1.60m |
| 12 Garden | | | |

DISCLAIMER: All materials, dimensions and drawings are approximate. information is subject to change without notice. drawings are not to scale and actual usable floor spaces may vary from the scale floor plans. the developer reserves the right to make revisions to the floor plans

FLOOR PLAN



GROUND FLOOR PLAN



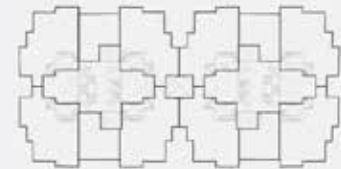
FIRST FLOOR PLAN



TYPICAL FLOOR PLAN



ROOF FLOOR PLAN



TYPE F

2 BEDROOMS + LIVING
TOTAL AREA: 152 M²

| | | | |
|-------------------|-------|---|-------|
| 1 Reception | 4.20m | x | 4.20m |
| 2 Dining | 3.00m | x | 4.20m |
| 3 Kitchen | 1.30m | x | 2.40m |
| 4 Guest Bathroom | 2.80m | x | 2.80m |
| 5 Terrace | 2.60m | x | 2.00m |
| 6 Master Bedroom | 3.80m | x | 3.90m |
| 7 Master Dressing | 2.30m | x | 2.00m |
| 8 Bathroom | 3.80m | x | 3.40m |
| 9 Master Bathroom | 3.70m | x | 2.90m |
| 10 Bedroom 1 | 4.20m | x | 1.60m |
| 11 Bedroom 2 | 1.50m | x | 1.60m |
| 12 Garden | | | |

DISCLAIMER: All materials, dimensions and drawings are approximate. information is subject to change without notice. drawings are not to scale and actual usable floor spaces may vary from the scale floor plans. the developer reserves the right to make revisions to the floor plans

FLOOR PLAN



GROUND FLOOR PLAN



FIRST FLOOR PLAN



TYPICAL FLOOR PLAN



ROOF FLOOR PLAN



TYPE F

1 BEDROOM
TOTAL AREA: 72 M²

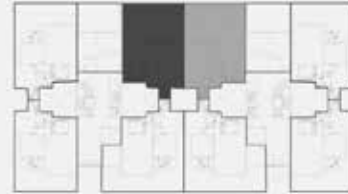
| | | | |
|-------------|-------|---|-------|
| 1 Reception | 3.70m | x | 3.70m |
| 2 Terrace 1 | 1.60m | x | 3.70m |
| 3 Kitchen | 3.20m | x | 2.40m |
| 4 Bathroom | 1.80m | x | 2.00m |
| 5 Bedroom | 3.95m | x | 3.90m |
| 6 Garden | | | |

DISCLAIMER: All materials, dimensions and drawings are approximate. information is subject to change without notice. drawings are not to scale and actual usable floor spaces may vary from the scale floor plans. the developer reserves the right to make revisions to the floor plans

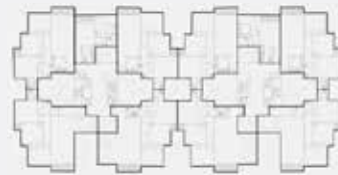
FLOOR PLAN



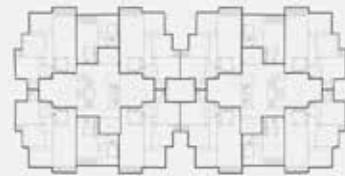
GROUND FLOOR PLAN



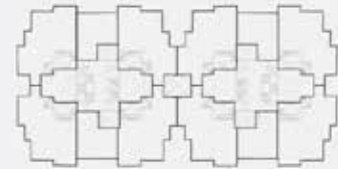
FIRST FLOOR PLAN



TYPICAL FLOOR PLAN



ROOF FLOOR PLAN



TYPE F

3 BEDROOMS
TOTAL AREA: 160 M²

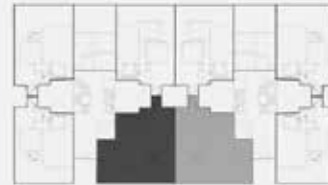
| | | | |
|-------------------|-------|---|-------|
| 1 Reception | 4.20m | x | 4.20m |
| 2 Dining | 4.20m | x | 3.00m |
| 3 Guest Toilet | 1.40m | x | 2.00m |
| 4 Kitchen | 2.80m | x | 2.80m |
| 5 Bathroom | 2.60m | x | 1.95m |
| 6 Master Bedroom | 3.80m | x | 3.75m |
| 7 Master Dressing | 1.42m | x | 2.00m |
| 8 Master Bathroom | 2.30m | x | 2.00m |
| 9 Bedroom 1 | 3.80m | x | 3.70m |
| 10 Bedroom 2 | 3.80m | x | 3.80m |
| 11 Terrace 1 | 4.20m | x | 1.60m |
| 12 Terrace 2 | 1.40m | x | 1.60m |
| 13 Garden | | | |

DISCLAIMER: All materials, dimensions and drawings are approximate. information is subject to change without notice. drawings are not to scale and actual usable floor spaces may vary from the scale floor plans. the developer reserves the right to make revisions to the floor plans

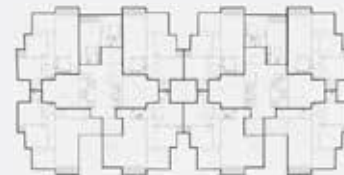
FLOOR PLAN



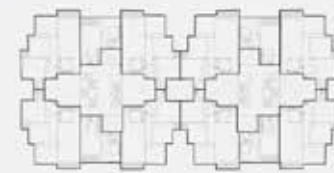
GROUND FLOOR PLAN



FIRST FLOOR PLAN



TYPICAL FLOOR PLAN



ROOF FLOOR PLAN



TYPE F

3 BEDROOMS + LIVING
TOTAL AREA: 185 M²

| | | | |
|-------------------|-------|---|--------|
| 1 Reception | 4.00m | x | 4.20m |
| 2 Dining | 3.00m | x | 4.20m |
| 3 Living Room | 3.40m | x | 5.70m |
| 4 Kitchen | 2.80m | x | 2.80m |
| 5 Guest Toilet | 1.40m | x | 2.00m |
| 6 Bathroom | 2.20m | x | 2.500m |
| 7 Master Bedroom | 4.20m | x | 3.70m |
| 8 Master Bathroom | 2.40m | x | 2.00m |
| 9 Bedroom 1 | 3.80m | x | 3.70m |
| 10 Bedroom 2 | 3.80m | x | 3.80m |
| 11 Terrace 1 | 1.60m | x | 4.20m |
| 12 Terrace 2 | 1.40m | x | 1.60m |
| 13 Garden | | | |

DISCLAIMER: All materials, dimensions and drawings are approximate. information is subject to change without notice. drawings are not to scale and actual usable floor spaces may vary from the scale floor plans. the developer reserves the right to make revisions to the floor plans

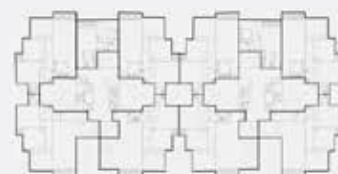
FLOOR PLAN



GROUND FLOOR PLAN



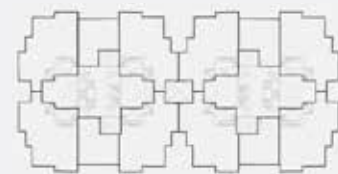
FIRST FLOOR PLAN



TYPICAL FLOOR PLAN



ROOF FLOOR PLAN

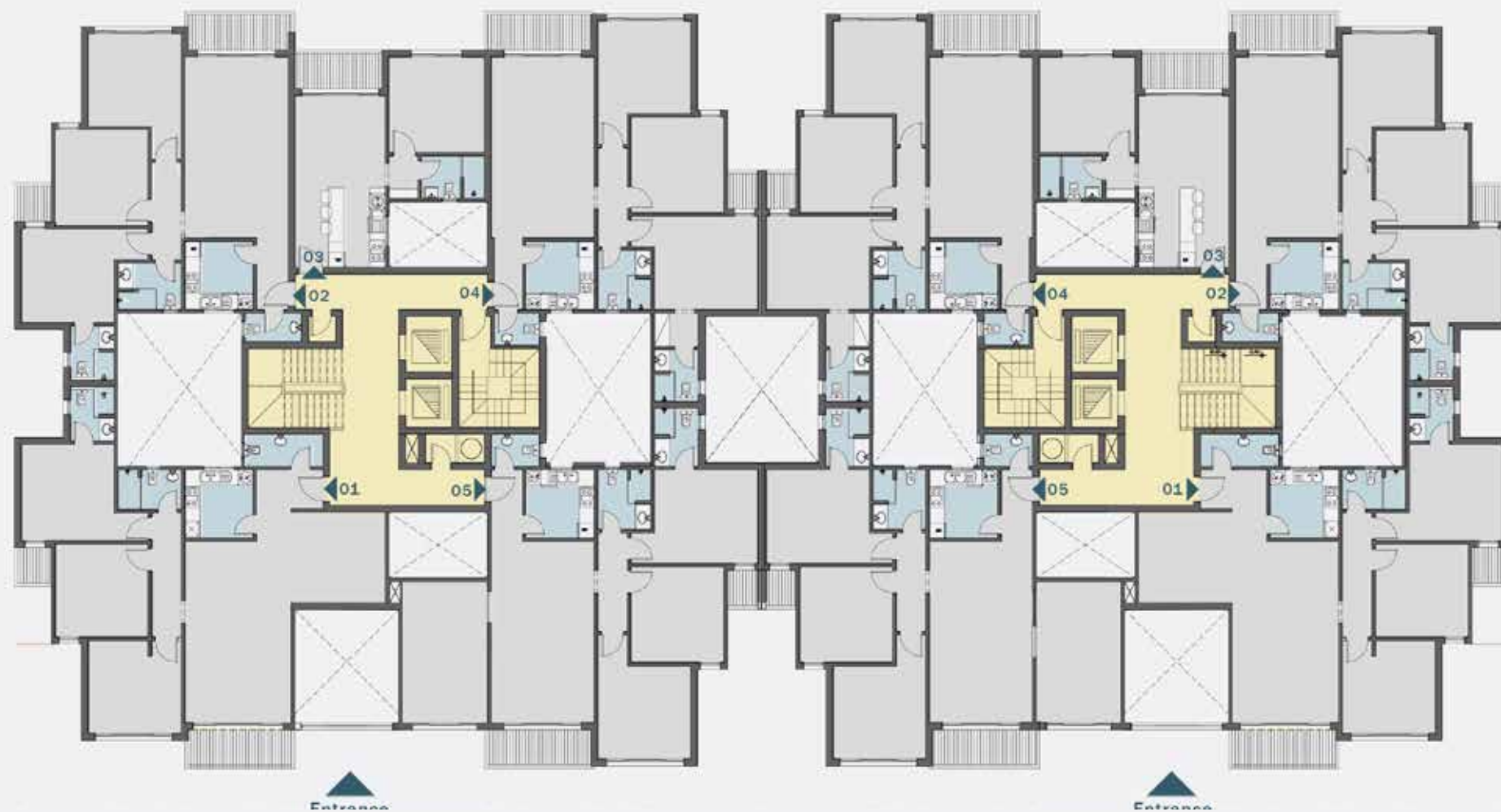


TYPE F

3 BEDROOMS
TOTAL AREA: 156 M²

| | | | |
|-------------------|-------|---|-------|
| 1 Reception | 4.20m | x | 4.20m |
| 2 Dining | 3.00m | x | 4.20m |
| 3 Guest Toilet | 1.30m | x | 2.40m |
| 4 Kitchen | 2.80m | x | 2.80m |
| 5 Bathroom | 2.60m | x | 1.95m |
| 6 Master Bedroom | 3.85m | x | 3.80m |
| 7 Master Bathroom | 2.30m | x | 1.90m |
| 8 Bedroom 1 | 3.70m | x | 3.80m |
| 9 Bedroom 2 | 3.80m | x | 3.80m |
| 10 Terrace 1 | 1.60m | x | 4.20m |
| 11 Terrace 2 | 1.50m | x | 1.60m |
| 12 Garden | | | |

DISCLAIMER: All materials, dimensions and drawings are approximate. information is subject to change without notice. drawings are not to scale and actual usable floor spaces may vary from the scale floor plans. the developer reserves the right to make revisions to the floor plans



DISCLAIMER: All materials, dimensions and drawings are approximate. information is subject to change without notice. drawings are not to scale and actual usable floor spaces may vary from the scale floor plans. the developer reserves the right to make revisions to the floor plans

APARTMENT F

First Floor

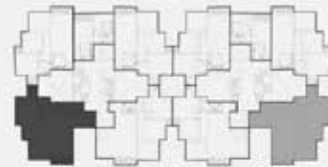
FLOOR PLAN



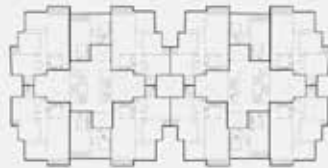
GROUND FLOOR PLAN



FIRST FLOOR PLAN



TYPICAL FLOOR PLAN



ROOF FLOOR PLAN



TYPE F

3 BEDROOMS + LIVING
TOTAL AREA: 180 M²

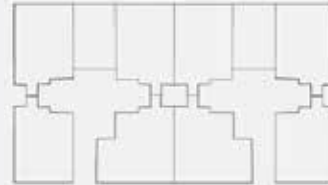
| | | | |
|-------------------|-------|---|-------|
| 1 Reception | 4.20m | x | 4.20m |
| 2 Dining | 3.00m | x | 4.20m |
| 3 Kitchen | 2.80m | x | 2.80m |
| 4 Guest Toilet | 1.50m | x | 3.00m |
| 5 Living | 3.80m | x | 3.60m |
| 6 Bathroom | 2.60m | x | 1.65m |
| 7 Master Bedroom | 3.85m | x | 3.80m |
| 8 Master Bathroom | 2.30m | x | 2.00m |
| 9 Bedroom 1 | 3.70m | x | 3.70m |
| 10 Bedroom 2 | 3.70m | x | 3.80m |
| 11 Terrace 1 | 4.20m | x | 1.60m |
| 12 Terrace 2 | 1.50m | x | 1.60m |

DISCLAIMER: All materials, dimensions and drawings are approximate. information is subject to change without notice. drawings are not to scale and actual usable floor spaces may vary from the scale floor plans. the developer reserves the right to make revisions to the floor plans

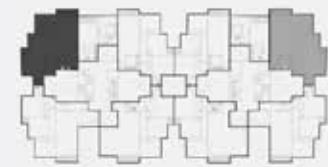
FLOOR PLAN



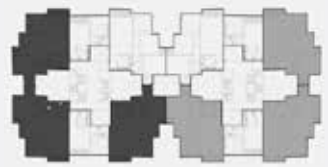
GROUND FLOOR PLAN



FIRST FLOOR PLAN



TYPICAL FLOOR PLAN



ROOF FLOOR PLAN



TYPE F

3 BEDROOMS
TOTAL AREA: 156 M²

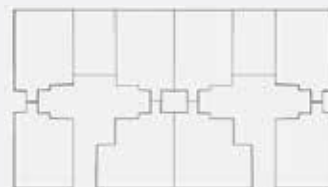
| | | | |
|-------------------|-------|---|-------|
| 1 Reception | 4.20m | x | 4.20m |
| 2 Dining | 3.00m | x | 4.20m |
| 3 Guest Toilet | 1.30m | x | 2.10m |
| 4 Kitchen | 2.80m | x | 2.80m |
| 5 Bathroom | 2.60m | x | 1.95m |
| 6 Master Bedroom | 3.85m | x | 3.80m |
| 7 Master Bathroom | 2.30m | x | 1.90m |
| 8 Bedroom 1 | 3.70m | x | 3.80m |
| 9 Bedroom 2 | 3.80m | x | 3.80m |
| 10 Terrace 1 | 1.60m | x | 4.20m |
| 11 Terrace 2 | 1.40m | x | 1.60m |

DISCLAIMER: All materials, dimensions and drawings are approximate. information is subject to change without notice. drawings are not to scale and actual usable floor spaces may vary from the scale floor plans. the developer reserves the right to make revisions to the floor plans

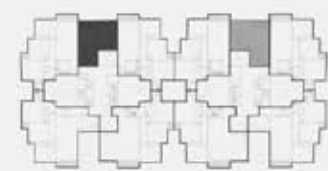
FLOOR PLAN



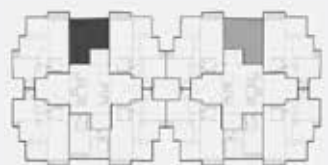
GROUND FLOOR PLAN



FIRST FLOOR PLAN



TYPICAL FLOOR PLAN



ROOF FLOOR PLAN



TYPE F

1 BEDROOM
TOTAL AREA: 72 M²

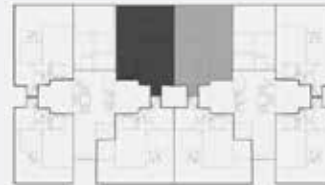
| | | | |
|-------------|-------|---|-------|
| 1 Reception | 3.70m | x | 3.70m |
| 2 Terrace 1 | 1.60m | x | 3.70m |
| 3 Kitchen | 3.20m | x | 2.40m |
| 4 Bathroom | 1.80m | x | 2.00m |
| 5 Bedroom | 3.95m | x | 3.90m |

DISCLAIMER: All materials, dimensions and drawings are approximate. information is subject to change without notice. drawings are not to scale and actual usable floor spaces may vary from the scale floor plans. the developer reserves the right to make revisions to the floor plans

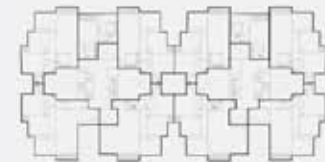
FLOOR PLAN



GROUND FLOOR PLAN



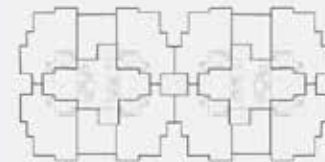
FIRST FLOOR PLAN



TYPICAL FLOOR PLAN



ROOF FLOOR PLAN



TYPE F

3 BEDROOMS
TOTAL AREA: 160 M²

| | | | |
|-------------------|-------|---|-------|
| 1 Reception | 4.20m | x | 4.20m |
| 2 Dining | 4.20m | x | 3.00m |
| 3 Guest Toilet | 1.40m | x | 2.00m |
| 4 Kitchen | 2.80m | x | 2.80m |
| 5 Bathroom | 2.60m | x | 1.95m |
| 6 Master Bedroom | 3.80m | x | 3.75m |
| 7 Master Dressing | 1.42m | x | 2.00m |
| 8 Master Bathroom | 2.30m | x | 2.00m |
| 9 Bedroom 1 | 3.80m | x | 3.70m |
| 10 Bedroom 2 | 3.80m | x | 3.80m |
| 11 Terrace 1 | 4.20m | x | 1.60m |
| 12 Terrace 2 | 1.40m | x | 1.60m |

DISCLAIMER: All materials, dimensions and drawings are approximate. information is subject to change without notice. drawings are not to scale and actual usable floor spaces may vary from the scale floor plans. the developer reserves the right to make revisions to the floor plans

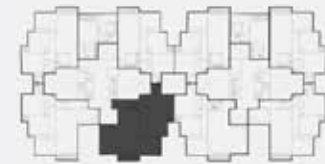
FLOOR PLAN



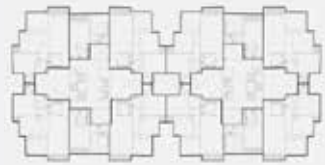
GROUND FLOOR PLAN



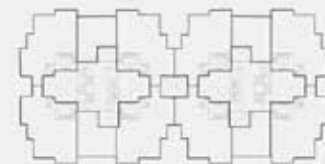
FIRST FLOOR PLAN



TYPICAL FLOOR PLAN



ROOF FLOOR PLAN



TYPE F

3 BEDROOMS + LIVING
TOTAL AREA: 185 M²

| | | | |
|-------------------|-------|---|-------|
| 1 Reception | 4.00m | x | 4.20m |
| 2 Dining | 3.00m | x | 4.20m |
| 3 Living Room | 3.40m | x | 5.70m |
| 4 Kitchen | 2.80m | x | 2.80m |
| 5 Toilet | 1.40m | x | 2.00m |
| 6 Bathroom | 2.20m | x | 2.50m |
| 7 Master Bedroom | 4.20m | x | 3.70m |
| 8 Master Bathroom | 2.00m | x | 2.40m |
| 9 Bedroom 1 | 3.80m | x | 3.70m |
| 10 Bedroom 2 | 3.80m | x | 3.80m |
| 11 Terrace 1 | 4.20m | x | 1.60m |
| 12 Terrace 2 | 1.40m | x | 1.60m |

DISCLAIMER: All materials, dimensions and drawings are approximate. information is subject to change without notice. drawings are not to scale and actual usable floor spaces may vary from the scale floor plans. the developer reserves the right to make revisions to the floor plans



DISCLAIMER: All materials, dimensions and drawings are approximate. information is subject to change without notice. drawings are not to scale and actual usable floor spaces may vary from the scale floor plans. the developer reserves the right to make revisions to the floor plans

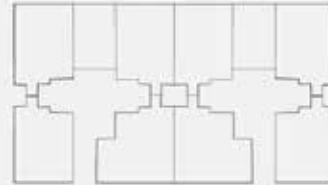
APARTMENT F

Typical Floor

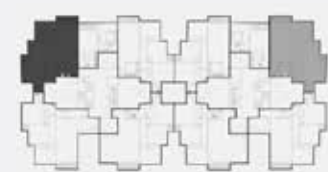
FLOOR PLAN



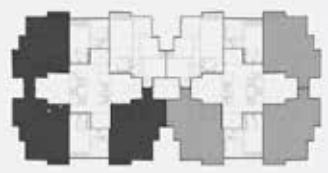
GROUND FLOOR PLAN



FIRST FLOOR PLAN



TYPICAL FLOOR PLAN



ROOF FLOOR PLAN



TYPE F

3 BEDROOMS
TOTAL AREA: 156 M²

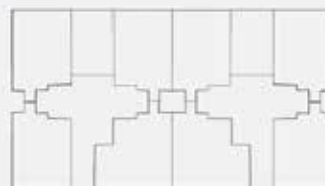
| | | | |
|-------------------|-------|---|-------|
| 1 Reception | 4.20m | x | 4.20m |
| 2 Dining | 3.00m | x | 4.20m |
| 3 Guest Toilet | 1.30m | x | 2.40m |
| 4 Kitchen | 2.80m | x | 2.80m |
| 5 Bathroom | 2.60m | x | 1.95m |
| 6 Master Bedroom | 3.80m | x | 3.75m |
| 7 Master Bathroom | 2.30m | x | 1.90m |
| 8 Bathroom 1 | 3.70m | x | 3.80m |
| 9 Bedroom 2 | 3.80m | x | 3.80m |
| 10 Terrace 1 | 1.60m | x | 4.20m |
| 11 Terrace 2 | 1.50m | x | 1.60m |

DISCLAIMER: All materials, dimensions and drawings are approximate. information is subject to change without notice. drawings are not to scale and actual usable floor spaces may vary from the scale floor plans. the developer reserves the right to make revisions to the floor plans

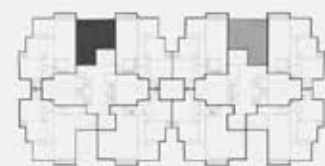
FLOOR PLAN



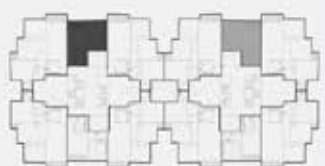
GROUND FLOOR PLAN



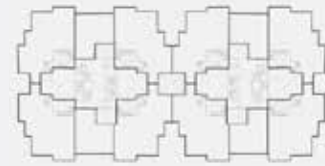
FIRST FLOOR PLAN



TYPICAL FLOOR PLAN



ROOF FLOOR PLAN



TYPE F

1 BEDROOM
TOTAL AREA: 72 M²

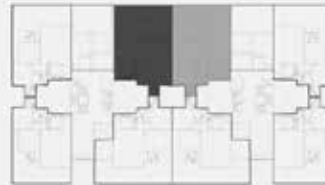
| | | | |
|-------------|-------|---|-------|
| 1 Reception | 4.00m | x | 3.70m |
| 2 Terrace 1 | 1.25m | x | 3.40m |
| 3 Kitchen | 3.20m | x | 2.45m |
| 4 Bathroom | 1.60m | x | 2.60m |
| 5 Bedroom | 3.80m | x | 3.90m |

DISCLAIMER: All materials, dimensions and drawings are approximate. information is subject to change without notice. drawings are not to scale and actual usable floor spaces may vary from the scale floor plans. the developer reserves the right to make revisions to the floor plans

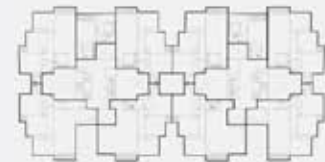
FLOOR PLAN



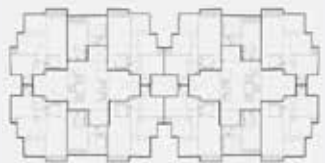
GROUND FLOOR PLAN



FIRST FLOOR PLAN



TYPICAL FLOOR PLAN



ROOF FLOOR PLAN



TYPE F

3 BEDROOMS
TOTAL AREA: 160 M²

| | | | |
|-------------------|-------|---|-------|
| 1 Reception | 4.20m | x | 4.20m |
| 2 Dining | 4.20m | x | 3.00m |
| 3 Guest Toilet | 1.30m | x | 2.10m |
| 4 Kitchen | 2.80m | x | 2.80m |
| 5 Bathroom | 2.60m | x | 1.90m |
| 6 Master Bedroom | 3.85m | x | 3.80m |
| 7 Master Dressing | 1.42m | x | 2.00m |
| 8 Master Bathroom | 2.30m | x | 2.00m |
| 9 Bedroom 1 | 3.80m | x | 3.70m |
| 10 Bedroom 2 | 3.80m | x | 3.80m |
| 11 Terrace 1 | 4.20m | x | 1.60m |
| 12 Terrace 2 | 1.40m | x | 1.60m |

DISCLAIMER: All materials, dimensions and drawings are approximate. information is subject to change without notice. drawings are not to scale and actual usable floor spaces may vary from the scale floor plans. the developer reserves the right to make revisions to the floor plans

PROJECT CONSULTANT

- The new administrative capital.
- El Alamein district.
- Katameya heights villa.
- Al-burouj compound (four parcels).
- Layan residence.
- Hyde park sporting club.
- German university in Cairo.



OKOPLAN is a full-service engineering consultancy firm, originally founded in Stuttgart, Germany in 1990. Another office was later established in Cairo, Egypt in 1993.

LANDSCAPE CONSULTANT

- Marassi Village.
- Il Monte Galala.
- Fouka Bay.
- Mangroovy Residence.
- Rixos el Allamein.
- Telal Resort (Al-Alamein, Al-Sokha).
- Amwaj Beach Resort.
- Accor Hotel.



At Ökoplan, we design, with the same passion and precision, small private urban gardens and large landscape solutions for public spaces and compounds.

CONSULTANT PAST PROJECTS

With over 50 years of experience in the field of engineering consultancy, ECG exemplifies an unparalleled legacy. For years, it has remained true to its roots and core values while being at the forefront of innovation and global trends; thereby creating a unique quality allowing it to meet Clients' requirements at the highest efficiency levels.